

WANGANUI DISTRICT COUNCIL



WANGANUI DISTRICT
EMERGENCY MANAGEMENT



Local Emergency Management Plan

October 2009

Wanganui District Map



CONTENTS

Wanganui District Map (including locations of VHF radios)	2
Acronyms	4
1. INTRODUCTION	5
1.1 Authority	5
1.2 Purpose of the Plan.....	5
1.3 Objectives of the Plan	5
1.4 CDEM Group Plan - Relationship	6
2. STRATEGIC ISSUES	6
2.1 Description of the Wanganui District.....	6
2.1.1 The Land	6
2.1.2 The People	7
2.1.37 The Infrastructure.....	7
2.2 Strategic Direction	8
2.3 Wanganui District Risk Profile.....	8
2.3.1 Definition.....	8
2.3.2 Reduction	8
2.4 Targets & Actions.....	9
3. OPERATIONAL PLAN	9
3.1 Readiness	9
3.2 Response	10
3.2.1 Incident and Emergency Levels.....	10
3.2.2 Declarations	10
3.2.3 Appointment of Local Controllers.....	11
3.2.4 Powers of Local Controllers	11
3.2.5 Liaison	11
3.2.6 Wanganui District EOC Structure	12
3.2.7 Liaison with Emergency Services and other Organisations ..	12
3.2.8 National Warning System.....	12
3.3 Escalation of Emergency Events	13
3.4 Recovery	13
3.4.1 Function	13
3.4.2 Priorities for Recovery Assistance.....	13
3.4.3 Recovery Manager	13

3.4.4	Transition from Response to Recovery	13
4.	ADMINISTRATIVE PLAN	14
4.1	Wanganui District Council CDEM Structure.....	14
4.2	Co-ordinating Executive Group (CEG) Representation	14
4.3	Wanganui Emergency Management Committee	14
4.4	Manawatu-Wanganui Regional Welfare Advisory Group	15
5.	EMERGENCY OPERATING PROCEDURES	15
6.	LEVELS OF EMERGENCY	16
Table 1.1	Incident / Emergency Levels	18
Fig. 1.1	Wanganui Emergency Operations Centre Functional Plan (Employing Coordinated Incident Management System Principles)	20
Table 2.1	Hazardscape	21
Figure 2.1	Wanganui Emergency Operations Centre Responsibilities	24

Acronyms

4 R's	(Reduction, Readiness, Response and Recovery)
CDEMG	Civil Defence Emergency Management Group
CEG	Co-ordinating Executive Group
CIMS	Co-ordinated Incident Management Systems
EOC	Emergency Operating Centre
EMC	Emergency Management Committee
EMG	Emergency Management Group
EMO	Emergency Management Office
HSTLC	Hazardous Substance & Technical Liaison Committee
MCDEM	Ministry of Civil Defence and Emergency Management
MWRC	Manawatu Wanganui Regional Council
WDC	Wanganui District Council
WDHB	Whanganui District Health Board

1. INTRODUCTION

1.1 Authority

The Wanganui District Council Emergency Management Plan 2009 (hereafter referred to as the Plan) has been produced by the Wanganui District Council as part of its overall strategy in planning and providing for Civil Defence Emergency Management (CDEM) within its area.

The Wanganui Emergency Management Committee has endorsed this Plan at its meeting of 12 August 2009.

The Wanganui District Council approved the document on 19 October 2009. The Plan becomes operative from this date and remains operative for 5 years thereafter or when formally reviewed.

Amendments to this Plan will be made independently or in tandem with amendments to the regional Manawatu-Wanganui CDEM Group Plan to maintain consistency.

1.2 Purpose of the Plan

Civil Defence Emergency Management means¹ the application of knowledge, measures and practices that:

- are necessary or desirable for the safety of the public or property; and,
- are designed to guard against, prevent, reduce or overcome any hazard or harm or loss that may be associated with any emergency; and
- includes, without limitation, the planning, organisation, co-ordination and implementation of those measures, knowledge and practices.

This Plan does not address the broad scope of CDEM. Whilst the Plan will be complementary to the Civil Defence Emergency Management Group Plan, its primary purpose is focused on describing the local arrangements for readiness, reduction, response and recovery at the district level. The supporting reference documentation includes:

- The Civil Defence Emergency Management Act 2002
- The National CDEM Strategy.
- The National CDEM Plan.
- The Manawatu-Wanganui CDEM Group Plan.
- The Wanganui District Council 10-Year Plan².

1.3 Objectives of the Plan

The objectives of the Plan are:

- To describe the provision of local CDEM activities within the Wanganui District.
- To detail the capability of the Wanganui District Council to function to the

¹ Civil Defence Emergency Management Act 2002, s4

² Local Government Act 2002, s93.

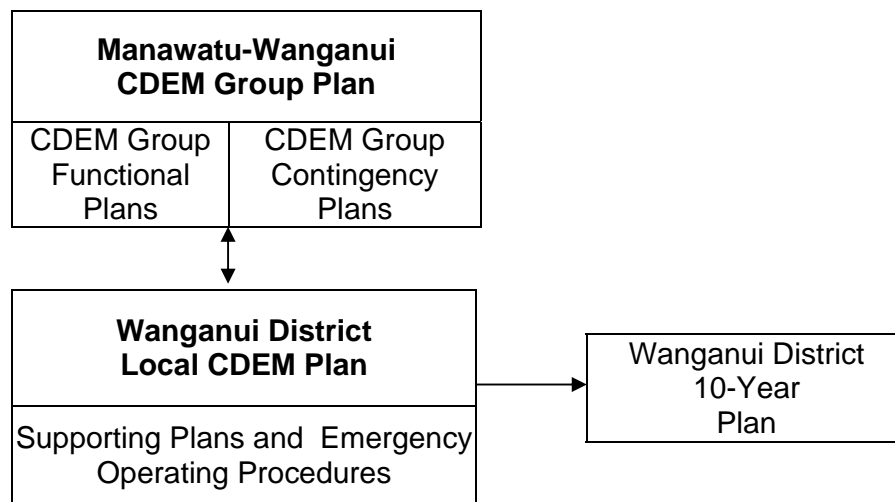
fullest possible extent, even though this may be at a reduced level, during and after an emergency.

1.4 CDEM Group Plan - Relationship

This Plan is locally focussed, but is consistent with and complements the CDEM Group Plan. The Plan should be read in conjunction with the Group Plan and the Wanganui District Council 10-Year Plan. *Fig 1.1 depicts the relationships.*

Wanganui District Council as a Territorial Local Authority is a member of the Manawatu-Wanganui CDEM Group formed under s.12 of the Act and is represented on that Joint Committee by Senior Councillor Randhir Dahya. The Chief Executive of Wanganui District Council (or a delegated representative) is a member of the Co-ordinating Executive Group (CEG) formed under s.20 of the Act - see para 4.2.

Fig 1.1 Relationship of this Plan with others



For a list of supporting plans and Emergency Operating Procedures (EOPs), see Section 5.

2. STRATEGIC ISSUES

2.1 Description of the Wanganui District

The information below is sourced from the Council's 10-Year Plan 2009-2019, the District Plan and from Statistics New Zealand quarterly reports.

2.1.1 The Land

The Wanganui District comprises an area of approximately 2,337 square kilometres of predominantly rural land. The resources of the rural environment are diverse and range from the coastal sand plains to the mountain lands near the volcanic plateau. The dominant natural feature is the Whanganui River, which drains approximately 7,120 square kilometres of steep hill country of the central North Island in its 290 kilometre passage from Mt Tongariro to the Tasman Sea.

2.1.2 The People

At the 2006 Census of Population and Dwellings:

- The usually resident population for Wanganui District was 42,600, a change of -1.5 percent since 2001.
- In comparison, the population for New Zealand as a whole has increased by 7.7 percent since 1996.
- The majority (37,014) of residents live in the urban area, in comparison to the 5,622 living in the rural areas of the District.

2.1.7 The Infrastructure

Roading

Land transport infrastructure forms a significant component of the physical resources of the District and includes the network of roads, rail, pedestrian pathways, and cycleways.

The road network is dominated by State Highway 3, (Bulls to New Plymouth), and State Highway 4, (Wanganui to Taumarunui).

District roads follow the ridges and river valleys connecting the rural parts of the District.

There is one railway line through the District: the New Plymouth to Wanganui line.

The Wanganui Airport is located on the coast 8 kilometres from the city centre. It is certified to D2 status allowing aircraft up to 30-seater capacity for scheduled flights and 55 seater for chartered flights.

Port

Limited port facilities are located at the mouth of the Whanganui River and are managed by River City Port Ltd. They include six warehouse buildings and 580 lineal metres of wharf space.

Engineering Lifelines

Water supply comes from a series of artesian bores located up to 30 kilometres from the city. Three large mains carry the pumped water to three 230,000-litre reservoirs at Westmere before distribution to the city.

Collected sewage is pre-treated and then discharged to sea through the ocean outfall off South Beach.

Electricity is provided to all residences; with natural gas connections to more than 9,300 properties.

Communication Links

Communications facilities based within the Wanganui District include:

- **Commercial radio stations**
 - 88.1X FM
 - Awa FM
 - Classic Hits

-
- More FM
 - Radio Live
 - Radio Rhema
 - River City FM
 - Solid Gold

 - **Print Media**
 - Wanganui Chronicle
 - River City Press
 - Midweek
 - Tearaway Magazine

 - **Others**
 - Dial-the-News facility for the sight impaired
 - Public Internet access at the Davis Library

2.2 Strategic Direction

The strategic emergency management direction for the wider region is set out in the Manawatu-Wanganui CDEM Group Plan. CDEM activities conducted by Wanganui District Council in each of the Reduction, Readiness, Response and Recovery functions are consistent with the Group Plan.

2.3 Wanganui District Risk Profile

2.3.1 Definition

The risk profile is the outcome of prioritizing the likelihood and consequences of hazards. The recognised hazards that may cause, or contribute substantially to an emergency have been prioritized across the Manawatu-Wanganui Region according to their:

- **Seriousness** – the relative impact in terms of people and/or dollars; ·
- **Manageability** – the relative ability to mitigate or reduce the hazard;
- **Growth** – the rate at which the risk from the hazard will increase through either an increase in the probability of an event occurring, or an increase in the exposure of the community, or a combination of the two.

The Regional Hazards have then been reviewed for their specific applicability to the Wanganui District and the resulting risk profile is contained in the *Table 2.1 – The Wanganui District Hazardscape. (pages 21 to 24)*. The highest rating hazards are earthquake, tsunami, cyclonic storm, flooding, land subsidence and human pandemic.

2.3.2 Reduction

The Reduction process aims to ensure that the potential effects from hazard events are avoided or reduced to an acceptable level.

The primary aim is to avoid or mitigate the effects of hazards through appropriate land use planning mechanisms which are usually implemented and

enforced through legislation including:

- The Resource Management Act (1991).
- The Building Act (2004).
- The Local Government Act (2002) and the annual planning processes.

The National Hazardscape Report provides information on how hazards are currently managed across the '4R's of Reduction, Readiness, Response and Recovery.

2.4 Targets & Actions

The Manawatu-Wanganui CDEM Group Plan contains the strategic approach to treating the risks of the Manawatu-Wanganui Region. Those activities relating to risks within the Wanganui District that require a whole-of-Council approach are incorporated in the Wanganui District 10-Year Plan. Where appropriate, specific activities and their budget details are contained in the Wanganui District Council Annual Plan.

3. OPERATIONAL PLAN

3.1 Readiness

Goal and Principal Objectives

To protect life and property and to prepare the community to effectively respond to emergency situations.³

Principal objectives

- To coordinate plans and response arrangements with emergency services and community agencies.
- To maintain effective processes to help the community respond to, and recover from, emergencies.
- To operate a hazard warning system based on information sources such as river gauges, specific weather forecasts, volcanic and tsunami reports, Group and Ministry of Civil Defence Emergency Management notifications.
- To review the Emergency Operating Procedures in response to evolving trends or specific emergency events.
- To contribute to the implementation of the Manawatu-Wanganui Regional Civil Defence Emergency Management Group Plan.

These objectives are achieved through a number of activities; such as the promotion and education of District residents through advertising, training of volunteers, coordination of local efforts with community agencies, and the application of appropriate processes for the effective management of emergency events.

³ Refer to Wanganui District Council 10-Year Plan, 2009-2019, Volume 2, page 244.

Facilities

An Emergency Operations Centre (EOC) has been established on the third floor of the Municipal Building in Guyton Street, Wanganui, to coordinate and manage local emergencies utilising the Coordinated Incident Management System (CIMS).

A diagram of the functional arrangement is found at Fig 1.1 on page 20.

The EOC is equipped with control and communication, processing and reporting services to deal comprehensively with a local emergency. Council staff volunteer their services to staff the EOC during emergency events, with support and advice from the emergency services, infrastructure providers, and community organisations as required. The EOC staff are regularly trained to ensure they have the appropriate skills and resources to provide an effective and efficient response to emergency events. The Community Annex, WWCT, (Defence) at Maria Place Extension is available as an alternative site.

Business Continuity Planning

Wanganui District Council has developed a comprehensive Business Continuity Plan that provides for a predetermined response to adverse events that affect the delivery of services and other functions of the Council. The Finance and Corporate Services Manager is responsible to ensure that the Wanganui District Council will be able to function to the fullest possible extent, even though this may be at a reduced level, during and after an emergency.

3.2 Response

3.2.1 Incident and Emergency Levels

Incidents or Emergencies are categorised into five levels reflecting the intensity or scope of the events detailed in the National and Group Plans.

These Levels are described in detail at Table 1.1 on pages 18 & 19.

3.2.2 Declarations

The processes for declaring, extending or terminating a state of emergency are outlined in the Director's Guide DGL 05/06 Declaration. Where any member (Territorial Local Authority) of the Manawatu-Wanganui Group considers that the functions and powers of the Group need to be enacted, (i.e. any time a local emergency is declared) the Group Controller should be briefed prior to the emergency being declared.

Under s.25 (5) of the Act, the Mayor of Wanganui District, or in their absence, the Deputy Mayor, may declare a state of local emergency for the Wanganui District. The Wanganui District Council has formally delegated to the Deputy Mayor, the authority to declare a state of local emergency for the Wanganui District in the absence of the Mayor.

The Group Plan (section 9.2) lists Councillor Randhir Dahya, as the Wanganui District Council representative to the Group, as authorised to declare a state of local emergency.

3.2.3 Appointment of Local Controllers

Under s.27 of the CDEM Act, the Manawatu-Wanganui CDEM Group has appointed the following Wanganui District persons to be a Local Controller:

1. Kevin Ross – Chief Executive
2. Rowan McGregor - Property Manager
3. Stuart Hylton – Senior Policy Adviser

The functions and powers of the Group Controller have been delegated to Local Controllers (under section 27(1) of the Act) in a manner consistent with any priorities for the use of resources and services that have been determined by the Group Controller.

3.2.4 Powers of Local Controllers

The Manawatu-Wanganui CDEM Group has delegated to the Local Controllers the functions and powers of the Group Controller, as outlined in sections 17, 18, 28, 76, 78, 86 to 92, and 94 of the CDEM Act 2002, such as:

- Functions of a Civil Defence Emergency Management Group
- General powers of a Civil Defence Emergency Management Group
- Functions of a Group Controller
- Power to require information
- Power of entry to obtain information in urgent cases
- Evacuation of premises and places
- Entry on premises
- Closing roads and public places
- Removal of aircraft, vessels, vehicles, etc
- Requisitioning powers
- Power to give directions
- Powers to carry out inspections, etc
- Contracts in urgent cases

3.2.5 Liaison

Liaison with Adjacent Territorial Authorities

The Manawatu-Wanganui CDEM Group will coordinate communication between member Territorial Local Authorities and supporting agencies during an event that has regional or national significance. During a local event this responsibility rests with the Local Controller.

The Wanganui District may also provide assistance to or request assistance from adjoining councils, as agreed, in the event of an emergency arising in the Wanganui District or an adjoining council's area.

3.2.6 Wanganui District Emergency Operations Centre (EOC) Structure

The Local Controller and the EOC are primarily concerned with planning and gathering of intelligence, and the systematic acquisition and prioritisation of resources in response to the requirements of the emergency. In both non-declared incidents and declared emergencies the local EOC acts to support the Incident Controllers who control specific incident scenes.

The EOC is staffed with suitably trained and competent individuals sourced from Council staff and has representation from other organisations such as Police, Fire, Ambulance, Infrastructure Group, Chorus, GasNet, Powerco and the Whanganui District Health Board. The EOC is fully equipped with dedicated telephone extensions, and alternative radio communications. If there is a loss of power to the EOC an on site generator has an immediate start up capability. The Council Chambers, Committee Rooms and surrounding offices serve as an overflow capability should the EOC demand additional facilities.

An extensive alternate communications network using VHF radio links the Emergency Operations Centre with twelve rural stations, as well as four urban Welfare Centres. Emergency welfare services may be provided by volunteers at various sites which may be used as Welfare Centres throughout the District. A central base is maintained at the St Paul's Hall, Cook Street. Further details are included in the Wanganui CDEM Welfare Emergency Operating Procedures.

3.2.7 Liaison with Emergency Services and other Organisations

Ongoing liaison with the Emergency Services and other organisations with specific roles will be maintained throughout any activation of the Emergency Operations Centre.

Ideally, Liaison Officers will be seconded to the EOC where they can take part in planning activities. Where that is not feasible, regular and comprehensive briefings, reports and advice of what actions are being taken will be made.

3.2.8 National Warning System

The Ministry of Civil Defence and Emergency Management has the following constant (24/7) procedure in place for warnings:

Telepager, Email, and Text Messages are sent to the 'on call' Emergency Management Duty Officer. This system is tested quarterly with a performance standard of 30 minutes for acknowledgement of a warning.

A fax message is also sent to the Emergency Management Office at the Wanganui District Council. Instructions are given as to what response is required upon receipt of the Warning.

Contact lists for personnel to be alerted for an event will be held with the Emergency Management Duty Officer, Local Controller, and the Emergency Operations Centre Manager.

3.3 Escalation of Emergency Events *(Refer to pages 16 & 17 for details)*

Before any escalation of an emergency event takes effect, the Wanganui District Local Controller will provide a comprehensive briefing to the Group Controller.

This briefing will particularly focus on:

- established priorities
- current activities and progress
- preparations already made for new initiatives
- areas of concern such as gaps in intelligence, shortages of logistic supplies, etc.

3.4 Recovery

Wanganui District Council has a separate Recovery Plan and this section therefore only summarises details of that Plan.

3.4.1 Function

The purpose of the Recovery process is to allow the community to return to a level of self reliance as soon as possible, at the same time taking action, which may relieve the future occurrence of disasters, and noting opportunities, which may arise to make improvements within the community.

3.4.2 Priorities for Recovery Assistance

Resources available to conduct Recovery activities will, at least initially, be scarce, and must therefore be allocated on a prioritised basis. The Recovery priorities of the Wanganui District are:

1. Health & Safety of Individuals and the Community
2. Social recovery
3. Physical recovery
4. Economic recovery

3.4.3 Recovery Manager

The District Recovery Manager will be appointed by the Chief Executive, and the appointment will normally be for a period of 28 days, which may be renewed, decreased or terminated according to circumstances. Wanganui District Council will endeavour to have an appropriately skilled person 'on standby' for any emergency situation to assist a smooth transition to recovery.

3.4.4 Transition from Response to Recovery

The Chief Executive may appoint a Recovery Manager at any time to manage repair and renewal activities, whether or not an emergency has been declared.

However it is most likely that the appointment will arise following an event that

has occasioned a full activation of the EOC, and will take effect as soon as possible following that decision or the a declaration of a state of local emergency.

Normally, the Recovery Manager will be appointed early in the Response phase and begin recovery operations in tandem with the winding down of response activities coordinated by the Emergency Operations Centre.

4. ADMINISTRATIVE PLAN

4.1 Wanganui District Council CDEM Structure

The Wanganui District Emergency Manager is responsible to the Customer Services Manager to plan and manage all issues of Readiness, Response and Recovery to ensure that this Plan can be implemented to meet the requirements of the Act. The risk Reduction outcome is managed by a number of Council activities, namely the Resource Management, Infrastructure Group and Regulatory Services staff.

The Council has delegated its functions, duties and powers relating to the administration of the Civil Defence Emergency Management Act 2002 to the Community Development Committee.

4.2 Co-ordinating Executive Group (CEG) Representation

A member of the Senior Management Team will represent the Wanganui District Council on the Manawatu-Wanganui CEG.

4.3 Wanganui Emergency Management Committee

The Wanganui District Council is a core member of the Wanganui Emergency Management Committee (EMC). The committee comprises senior representatives from:

Wanganui District Council	Ministry of Social Development
NZ Police	Child, Youth and Family Services
NZ Fire Service	Department of Conservation
St John Ambulance	GasNet
Whanganui District Health Board	EnviroHaz
Defence	Neighbourhood Support
Public Health	Red Cross
Infrastructure Group of WDC	Chorus
Powerco	

Representatives from utilities and other agencies, with a specific role in response and recovery activities, support the core committee as the need arises.

The role of the Committee is to:

- Improve the local (District) integration, co-ordination, and communication at all levels between all key emergency management agencies.
- Coordinate local resources for the planning needs of a variety of local emergency management issues, such as Hazardous Substances Technical Liaison Committees (HSTLCs) etc.

-
- Provide planning support and advice to Civil Defence Emergency Management projects (day to day functional link with the District Emergency Management Office).
 - Prepare District Response and Recovery Plans consistent with the Group Plan.
 - Provide advice and appropriate assistance to the Controller, the Emergency Operations Centre and the Recovery Manager.

4.4 Manawatu/Wanganui Regional Welfare Advisory Group

Wanganui District Council is a member of the Manawatu-Wanganui Regional Welfare Advisory Group (WAG). The WAG comprises representatives from:

District and Regional Authorities	Red Cross
District Health Boards	Work & Income
Citizens Advice Bureau	Housing NZ
Red Cross	St John
Salvation Army	Victim Support
Te Puni Kokiri	Neighbourhood Support Group
Victim Support	Child, Youth and Family Services

The Welfare Advisory Group (WAG) shall:

- Develop and provide advice for operational planning (guidelines and standard operating procedures) at a Group level for the provision of welfare services during and following any emergency event;
- Establish procedures for the control, organisation and inter-agency communication to ensure the effective delivery of welfare services during and following an emergency event;
- Provide advice and assistance to the Coordinating Executive Group for the development, implementation, maintenance, monitoring, and evaluation of the CDEM Group Plan;
- The Welfare Advisory Group will not be responsible for preparation of local plans or remove the responsibility for local welfare preparedness from local authorities other than to assist in standardisation of practices.

The Welfare Advisory Group meets every six months or more regularly if required.

5. EMERGENCY OPERATING PROCEDURES

All methods of operation, contact lists, action guides, contingency plans, hazard analyses and resource inventories for Wanganui Civil Defence Emergency Management are detailed as separate Emergency Operating Procedures for each particular function and are not included as part of this plan. Being working documents, they are constantly revised and are, therefore, not subject to the formal approval procedures of this Plan.

A complete set of the following Emergency Operating Procedures is kept in the Emergency Management Office, at the Wanganui District Council.

EOP 1	Emergency Operations Centre
EOP 2	Welfare
EOP 3	Civil Defence Welfare Centres
EOP 4	Tsunami Plan
EOP 5	Rescue
EOP 6	Controller's Guide
EOP 7	Communications
EOP 8	Pandemic Contingency Plan
EOP 9	Mt Ruapehu Crater Lake Lahar
EOP 9A	Mt Ruapehu Eruption
EOP 10	Logistics
EOP 11	Evacuation
EOP 12	District Emergency
EOP 13	Public Information
EOP 14	Recovery
EOP 15	Volcanic Contingency Plan
EOP 16	Specific Contingency Plans

6. LEVELS OF EMERGENCY

Level 1.

A single-agency incident with on-site coordination.

A local incident or response with activities dealt with by an emergency service, local authority or other responsible organisation probably through an Incident Control Point (ICP) but probably without the activation of an Emergency Operations Centre (EOC). Level 2 may be activated if more than one organisation is, or is likely to be, involved.

Level 2.

A multi-agency incident with on-site, local coordination at an ICP; these are managed by the Incident Controller reporting to the relevant lead agency.

A localised incident dealt with by the emergency services and or the Wanganui District Council, where inter-agency coordination using the Coordinated Incident Management System (CIMS), is required. Localised coordination may be provided from an ICP-type facility either established at the site, or from a pre-established facility such as an 'airport EOC' or similar. A Council or agency Emergency Operations Centre is not likely to be activated in support of a single incident if sufficient coordination is able to be provided at Incident Control Point level, but may be if required.

Council CDEM staff will monitor the situation if not directly involved and support the response where necessary.

Level 3.

A multi-agency emergency led by the CDEM Group, or a state of local emergency below Group-wide (district or ward); at this level, Group support and coordination may be required and the incident may be monitored by the National Controller.

An emergency response involving several response organisations and/or several incidents, where coordination and direction of the response and resources is required. EOCs should be activated by lead or coordinating organisations in support of Incident Controllers, whether a state of local emergency has been declared or not.

Responding agencies may request the Local Controller to undertake a coordinating role without a local emergency having been declared. The Group Emergency Management Office will monitor the situation and support the response where necessary.

Level 4.

A multi-agency emergency with more significant consequences than in Level 3; coordination may be required between agencies or areas or both; CDEM Group Emergency Coordinating Centre (ECC) level support and coordination is required; Group-wide declaration made or being considered; national monitoring will occur and national support is available.

An emergency that is regionally significant, or where the response and resources provided to a single or multiple EOCs would benefit from being coordinated. This level of coordination is provided from a Group Emergency Coordinating Centre, (ECC). A state of local emergency should be declared and Group coordination to be initiated.

Level 5.

A state of national emergency exists or the local emergency is of national significance; at this level, coordination by the National Controller will be required.

An emergency that is nationally significant, or requires national coordination and support for regionally coordinated responses.

The respective national coordination facility, such as the National Crisis Management Centre, (NCMC) OR National Health Coordination Centre (NHCC), will be activated to support Group ECC/EOCs, which will, in turn be supporting participating local/agency EOCs. A state of national emergency does not necessarily have to have been declared for this level of coordination to be initiated.

Table 1.1 Incident / Emergency Levels

Event Type	Event Status / Procedures	EOC Role	Controller's Role
<p>Level 1 Minor Event</p> <p>Local Incident for which a declaration is not required or appropriate</p> <ul style="list-style-type: none"> • Can be dealt with by Emergency Services and/or District Council resources alone. • Specialists may be required for specific circumstances 	<p>No Declaration</p> <p>The incident is dealt with using CIMS structures and principles</p> <p>Nature of the incident will dictate the Lead Agency</p>	<p>Agency Incident Control Point (ICP) may be activated</p> <p>EOC in Support</p> <p>Wanganui District EOC may be alerted or be partially operative in support of the Lead Agency</p>	<p>Local Controller notified if EOC involved</p>
<p>Level 2 Lead Agency Event</p> <p>Local Incident for which a declaration is not required or appropriate</p> <ul style="list-style-type: none"> • Can be dealt with by Emergency Services and/or District Council resources alone. • Specialists may be required for specific circumstances 	<p>No Declaration</p> <p>The incident is dealt with by a lead agency Incident Controller, using CIMS structures and principles.</p> <p>Wanganui District may assist with co-ordinating role for functions agreed on the day.</p>	<p>EOC in Support Agency Role</p> <p>Wanganui District EOC partially or fully activated and co-ordinating agreed functions, as requested by the lead agency Incident Controller.</p>	<p>Incident Controller co-ordinating resources, and informing agencies, media and the public as appropriate.</p> <p>Possible liaison with Group Emergency Management Duty Officer.</p>
<p>Level 3 Local Controller Supported Event</p> <p>Multi-agency incident with on-site coordination.</p> <ul style="list-style-type: none"> • escalates from Level 1 or 2 incident; or a • warning of a major event is received 	<p>Lead in to full activation of the Emergency Operations Centre, to assist with coordination of response.</p>	<p>EOC fully activated and is co-ordinating response and management of the emergency.</p> <p>Group Emergency Coordinating Centre (ECC) and adjacent EOCs may be alerted or partially activated to monitor and support the situation.</p>	<p>Local Controller providing advice and direction without the use of delegated powers.</p> <p>Group Controller monitors situation via the Group ECC and direct liaison to the Wanganui District Local Controller.</p>

Event Type	Event Status / Procedures	EOC Role	Controller's Role
<p>Level 4 Group Controller Led Event</p> <p>State of Local Emergency managed by Local Controller and coordinated by the Group Controller</p> <ul style="list-style-type: none"> • Due to the magnitude or geographic spread of the incident, the Group EOC has been activated to manage the emergency and co-ordinate regional resources and or • A warning of a significant event that will have a regional impact has been received or • Co-ordinated assistance is required to support an adjoining CDEM Group 	<p>Declaration of State of Local Civil Defence Emergency in the Manawatu-Wanganui Region is being considered, or has been deemed necessary, that involves the entire region or one or more districts. or An adjacent CDEM Group requires assistance or other major population centre is devastated.</p>	<p>Group ECC and all EOC's fully activated in liaison with relevant agencies.</p> <p>National Crisis Management Centre and adjacent Group ECC's may be alerted or partially activated to monitor the situation and be ready to respond if the situation deteriorates.</p>	<p>The Group Controller provides strategic advice and direction.</p> <p>Wanganui Local Controller responding to priorities set by the Group Controller.</p> <p>National Controller giving consideration to further escalation.</p>
<p>Level 5 National Controller Led Event</p> <p>A state of National Emergency has been declared</p>	<p>Declaration of state of national emergency is being considered, or has been deemed necessary. Managed by Local Controllers, and coordinated by Group Controllers in accordance with the National Controller's priorities</p>	<p>National Crisis Management Centre, Group ECC's and all EOC's fully activated</p>	<p>The National Controller exercising statutory powers. Group Controller responding to priorities set by the National Controller. The Wanganui Local Controller responding to priorities set by the Group Controller</p>

Fig. 1.1 Wanganui EOC Functional Chart (Employing CIMS Principles)

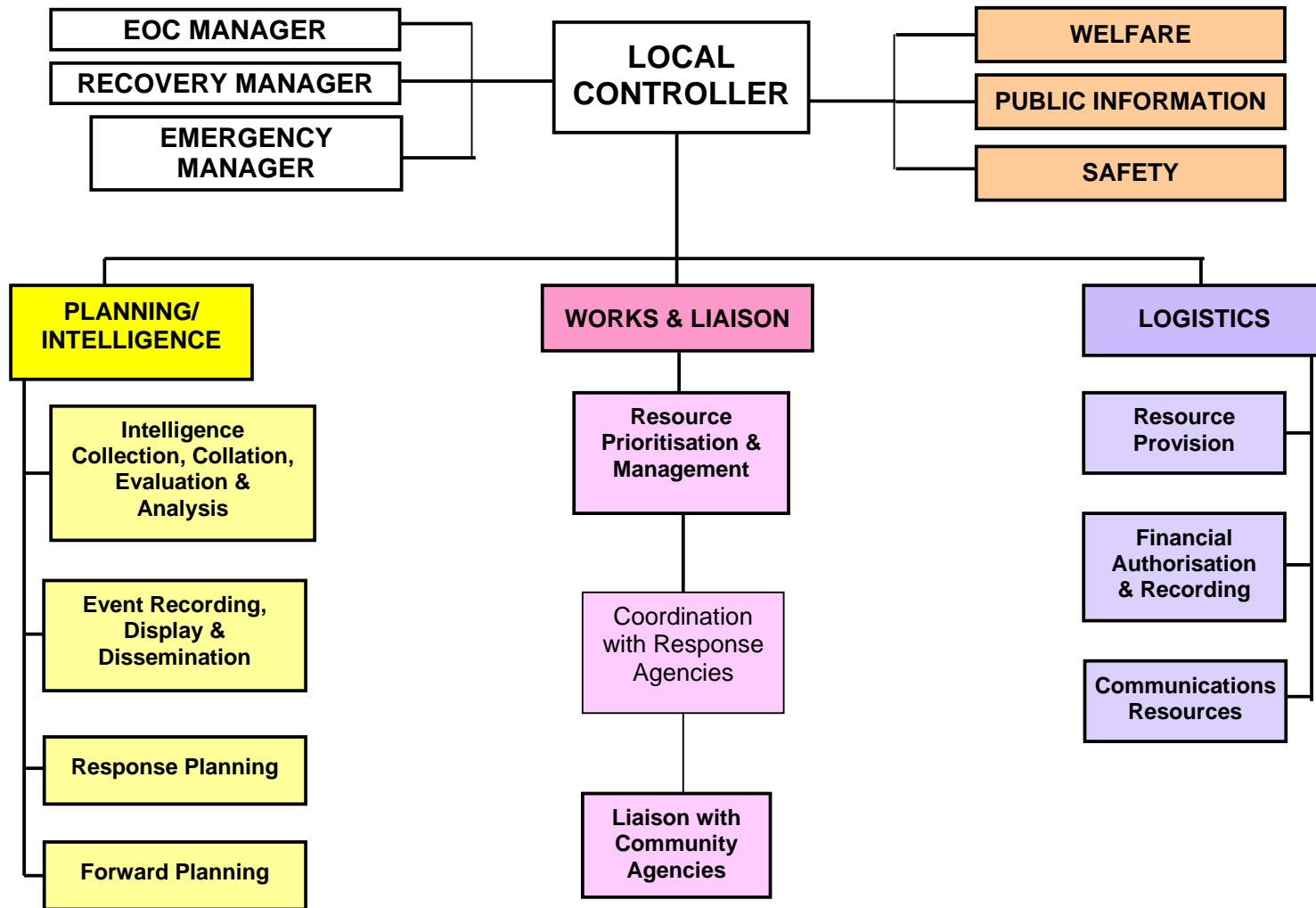


Table 2.1 Hazardscape

Earthquakes

General Description & Potential Consequences	Likelihood
<p>The District lies within a relatively high-risk earthquake zone.</p> <p>Buildings within the District are generally of single story, wooden construction and damage sustained in a medium magnitude earthquake should be relatively moderate.</p> <p>However, services and communications throughout the district would be disrupted. State Highways 3 and 4, the Whanganui River Road, the New Plymouth to Wanganui railway and some of the secondary roads throughout the District could all be affected by seismic movement.</p> <p>High pressure natural gas pipelines, urban water supply pipelines, high voltage national grid power supply lines, telephone trunk toll micro wave repeater and radio telephone masts and sewerage systems are all vulnerable throughout the district.</p>	<p>High</p> <p>The District has a 1 in 10 chance in any 15 year period of experiencing a MM 7-8.2 earthquake (150 yr sized event).</p> <p>There is a 1 in 10 chance in any 100 year period of experiencing a MM 7.5 – 9.8 earthquake ('1,000yr sized event')</p> <p>Note: MM = Modified Mercalli index which measures the "felt" intensity of an earthquake at any particular location – rather than the source.</p>

Tsunami

General Description & Potential Consequences	Likelihood
<p>Beach front areas, situated on the low lying areas adjacent to the Wanganui River mouth are at greatest risk from Tsunami.</p> <p>Events are most likely to be caused by offshore seismic activity with a correspondingly short warning time.</p>	<p>High</p> <p>Recent research indicates that the west coast of the Manawatu-Wanganui Region can expect a tsunami event of 2-4 metres above mean sea level once in any 500 year period.</p>

Cyclonic Storm

General Description & Potential Consequences	Likelihood
<p>The consequences of a cyclonic storm would include damage to key infrastructure lifelines, resulting in disruption of communication systems and isolation of communities and rural residents.</p>	<p>High</p> <p>The mudstone (papa) hill country is susceptible to landsliding, with a probability of failure</p>

	greater than 0.5 during a storm with high rainfall and a return period of approximately 20 years.
--	---

Flooding

General Description & Potential Consequences	Likelihood
<p>The riverfront urban area of Wanganui City is susceptible to flooding as well as</p> <ul style="list-style-type: none"> the Whangaehu Valley the lower reaches of the Whanganui River. <p>Bridge washouts and slips blocking roads will isolate rural residents from service centres.</p> <p>Detailed flood risk maps are compiled and maintained by the Operations Division of the Manawatu/Wanganui Regional Council.</p>	<p>High</p> <p>Currently high river levels in the Wanganui urban area from a one in 200 year event would flood houses in the Kowhai Park area to depths up to 2 metres deep.</p> <p>Despite present mitigation measures, the likelihood of a major flood occurring somewhere in the District, during any calendar year, remains high.</p>

Volcanic Eruption

General Description & Potential Consequences	Likelihood
<p>Volcanic eruptions from the central volcanic plateau, or from Mount Taranaki, have the potential to cause widespread disruption throughout the District.</p> <p>The northern area of the district borders the active Tongariro Volcanic Centre.</p> <p>The main threat in a major eruption would be from volcanic ash and lapilli (small particles of solidified lava [tephra]) The area affected would depend upon the force of the eruption, wind direction and strength.</p> <p>Hot debris could force evacuation of the population, disrupt power reticulation, road, rail, and telephone communications and pose serious problems for the welfare of livestock.</p> <p>Lahars pose another threat. Geological evidence shows that these tend to flow along the river valleys such as the Whangaehu.</p>	<p>Medium</p> <p>It is difficult to determine the exact likelihood and extent of future volcanic activity.</p> <p>However, history suggests that our volcanoes are not only active but are prone to frequent (5-10yr) events.</p> <p>The prevailing westerly wind (>32% of the time at 2,000 metres) distributes ash fall deposits away from the district.</p>

Utility Failure

General Description & Potential Consequences	Likelihood
<p>Power Outage: The District is dependent upon electrical power for the provision of essential services and the maintenance of 'normal' lifestyles.</p> <p>Communications: The District is dependent upon phone links for public safety and business continuance. These systems in turn are dependent on consistent power supply.</p> <p>The telephone system is essential for sustaining security alarms, computer links, paging systems; in addition to normal voice connection. Even a temporary loss of this service has major negative consequences for public safety.</p> <p>Gas Pipeline: The main high pressure Kapuni to Wellington, Natural Gas pipelines traverse the District coastal area.</p> <p>Gas release valves should seal any leakage of gas from seismic disturbance or mechanical interference.</p>	<p>Medium</p> <p>The storm events of February 2004, and July and August 2006 showed the vulnerability of our community to loss of these essential lifelines.</p>

Hazardous Substance Spills

General Description & Potential Consequences	Likelihood
<p>Bulk carriage of hazardous materials by rail and road to or through the district poses threats to the urban areas of the District.</p>	<p>Medium</p>

Major Fire

General Description & Potential Consequences	Likelihood
<p>Major Urban Fire: The 24 hour, 365 day presence of New Zealand Fire Service professional firefighters and the appropriate resources dramatically reduces the likelihood of a major fire in the urban area, with reduced capability because of distance in the rural areas.</p> <p>Major Rural Fire: The coastal sand dune country includes some forested areas, and whilst there are relatively few people at risk, large fires could spread between the Whangaehu and the Whanganui River mouths.</p>	<p>Low</p> <p>Low</p>

Human Pandemic

General Description & Potential Consequences	Likelihood
Since 2004 the potential of the H5N1 avian influenza has prompted considerable planning, and with the current H1N1 'swine flu' threat, the consequences from a new virus, with no immunity for the community are high.	High The Ministry of Health 'worst case' planning assumptions are for 40% incidence and 2% mortality over an 8 week period.

Fig 2.1 Wanganui EOC Responsibilities

People holding EOC appointments have the following key responsibilities:

EOC Appointment	Key Responsibilities
Local Controller	<ul style="list-style-type: none"> • Overall management of the emergency • Liaison with other involved agencies • Ensuring public safety • Liaison with Mayor and Elected Members • Liaison with Group Controller • Liaison with Regional Emergency Management Adviser (MCDEM)
Emergency Operations Centre Manager	<ul style="list-style-type: none"> • Responsible for establishment and staffing of the EOC. • Maintain an overview of the emergency event • Liaison with Local Controller
Planning & Intelligence Manager	<ul style="list-style-type: none"> • Assess the information, prioritise & plan the actions needed • Anticipate future changes or developments • Prepare briefing notes & situation reports
Logistics Manager	<ul style="list-style-type: none"> • Procurement of equipment, people and facilities, in support of other EOC functions.
Public Information Manager	<ul style="list-style-type: none"> • Issuing (following authorisation by the Local Controller) all statements to the media and general public, and media liaison. • Preparation of Situation Reports. • Press Conferences • VIP Visitors
Welfare Manager	<ul style="list-style-type: none"> • Activation of volunteer CDEM welfare teams as required and overall management of the welfare response. • Liaison with other Welfare Agencies.
Works and Liaison	<ul style="list-style-type: none"> • Emergency Operations Centre link with emergency services and community agencies including Infrastructure Group for planning and implementing any actions for response issues.